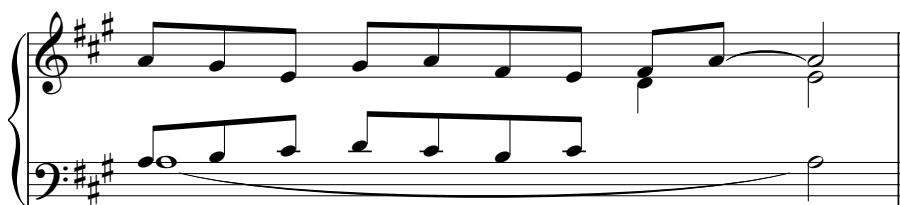


Svjetlost na prosvjetljenje narodâ

Gregorijanski napjev
Prir: I. Špralja



Ant.

P./N. Svjet-lost na pro - svje - tlje - nje na - ro - dâ, sla - vu pu - ka svo - ga i - zra - el - sko - ga.

A musical score for an antiphona. It consists of two staves: a treble clef staff and a bass clef staff. The key signature is three sharps (F#, C#, G#). The melody is written in the treble staff, and the accompaniment is in the bass staff. The music is in a simple, rhythmic style characteristic of Gregorian chant.

Lk 2,29-32

VIII. t.

P. 1. Sad ot - puštaš slugu svoga, Gospo - da - ru, po riječi svo - - - joj u mi - ru.
2. Tà vi - dješe oči mo - je, spa - - - - se - nje tvo - je,
3. ko - je si pripra - - - - vi - o pred licem svi - ju na - ro - da.
4. Svje - tlost na prosvjetljenje na - ro - da, i slavu puka svoga i - zra - el - sko - ga.

A musical score for a prose. It consists of two staves: a treble clef staff and a bass clef staff. The key signature is three sharps (F#, C#, G#). The melody is written in the treble staff, and the accompaniment is in the bass staff. The music is in a simple, rhythmic style characteristic of Gregorian chant.