

Hvaljen i slavljjen dovijeka

otpjevni psalam svetkovine Presvetoga Trojstva - A

Dn 3, 52-56

Otpjev

Blaženko Juračić

Hva-ljen i sla-vljen, hva-ljen i sla-vljen, hva-ljen i sla-vljen do - vije - ka!

non legato

The musical score for the chorus is written for voice and piano. The voice part is in a treble clef with a key signature of one sharp (F#) and a 7/8 time signature. The piano accompaniment is in a grand staff with a key signature of one sharp and a 7/8 time signature. The tempo/mood is marked 'non legato'. The music features a melodic line in the voice and a harmonic accompaniment in the piano, with some changes in time signature (6/4 and 7/8) indicated by a double bar line.

7

Psalmist

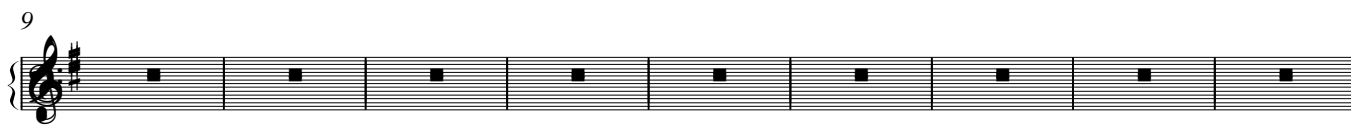
1. Blagoslovljen budi, Gospodine, Bože o - ta - ca naših, hvaljen i uzvi - si - van dovijeka!
2. Blagoslovljen budi na prijestolju kra - ljev - stva svoga, hvaljen i uzvi - si - van dovijeka!
3. Blagoslovljen budi na svo - du nebeskom, hvaljen i sla - vljen dovijeka!

The musical score for the first verse is written for voice and piano. The voice part is in a treble clef with a key signature of one sharp and a common time signature. The piano accompaniment is in a grand staff with a key signature of one sharp and a common time signature. The music features a melodic line in the voice and a harmonic accompaniment in the piano, with some changes in time signature (3/4 and common time) indicated by a double bar line.

8

1. Blagoslovljen budi u Domu svete sla - ve svoje, hvaljen i uzvi - si - van dovijeka!
2. Blagoslovljen ti što istra - žu - ješ bezdane, hvaljen i uzvi - si - van dovijeka!
3. Blagoslovljen ti što sjediš nad ke - ru - bima, hvaljen i uzvi - si - van dovijeka!

The musical score for the second verse is written for voice and piano. The voice part is in a treble clef with a key signature of one sharp and a common time signature. The piano accompaniment is in a grand staff with a key signature of one sharp and a common time signature. The music features a melodic line in the voice and a harmonic accompaniment in the piano, with some changes in time signature (3/4 and common time) indicated by a double bar line.



18



26

A musical score for measures 26 through 32. The score is written for a grand piano, consisting of a right-hand staff (treble clef) and a left-hand staff (bass clef). Both staves are in the key of D major, indicated by two sharps (F# and C#) on the key signature. The time signature is not explicitly shown but appears to be common time (C). Each measure contains a whole rest in both the right and left hands, indicating a complete silence for the duration of each measure. The score concludes with a double bar line at the end of measure 32.